



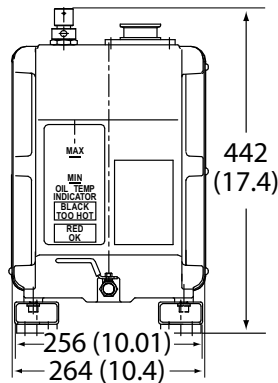
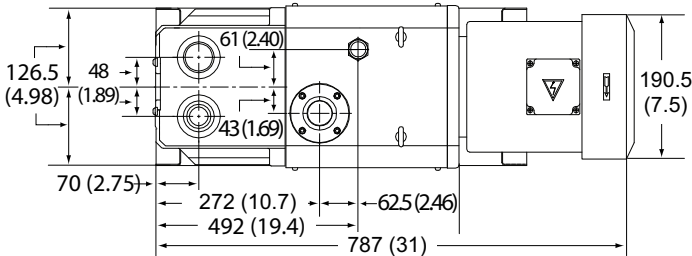
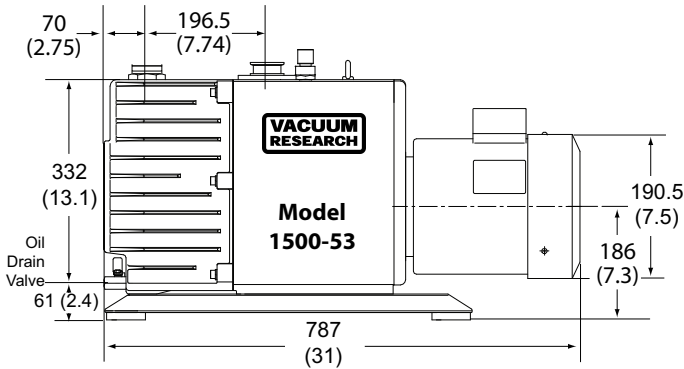
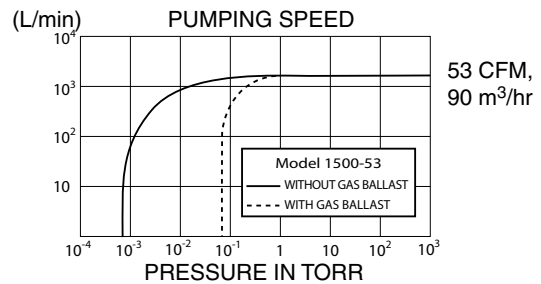
Model 1500-53 has NW-40 flanges for inlet and exhaust ports

**Features**

- Extremely Quiet • Anti Suck Back Design
- Satisfaction Guaranteed • Two Year Warranty
- Virtually Vibration Free • Motors for Any Voltage
- Complies with Machinery Directive 98/37/EC

**Applications**

- Plasma Systems • Electron Microscopes
- Vacuum Ovens & Furnaces • Freeze Dryers
- Cluster Tool Load Locks • Backing Turbo Pumps • Sputter & Deposition Systems



mm (inches) shown

Pumping Speed @ 60 Hz	1500 l/min, 53 CFM, 90 m <sup>3</sup> /hr.
Pumping Speed @ 50 Hz	1250 l/min, 44 CFM, 75 m <sup>3</sup> /hr.
Ultimate Pressure Gas Ballast Closed	5 x 10 <sup>-4</sup> Torr, 6.7x10 <sup>-2</sup> Pa, .0006 mbar
Ultimate Pressure Gas Ballast Open	5 x 10 <sup>-2</sup> Torr, 6.7 Pascal, .06 mbar
Standard Motor,	220/380V, 3 phase, 5 hp, 50/60 Hz
CE Mark, complies with	Machinery Directive 98/37/EC
Optional Motors	See ordering information
Power Connection	Junction box
Motor speed @ 60 Hz	1700 r.p.m.
Noise Level	56 dB
Water Vapor Tolerance	40 mbar, 30 Torr
Oil capacity	6200 cc; 6.5 Qt.
Lifting Lugs (on center of gravity)	2 Rings, 3/4" (19 mm) ID, M8 Thread
Holes in Base for Lag Bolts	4 Holes, 0.5" (12 mm) 22"x7" (550x178)
Weight Net: 242 lbs., 110 kg	Shipping: 367 lbs., 167 kg
Intake & exhaust type/diameter	NW-40 standard (Contact factory for more options)
Inlet Screen	Cone Shaped Removable Screen
Ambient operating temperature	7° to 40°C, 45° to 104°F

**Ordering Information**

**MODEL 1500-53 Vacuum Pump With Motor:**

Note: Tolerance is ± 10% of nominal value for all voltages.

200V, 50/60 Hz, 3 phase, 3.7 kw (5 hp)  
**p/n 1500-CE-200 50/60 ..... \$7960.**

220/380V, 50/60 Hz, 3 phase, 3.7 kw (5 hp)  
**p/n 1500-CE-380 50/60 ..... \$7960.**

230/460V, 50/60 Hz, 3 phase, 3.7 kw (5 hp)  
**p/n 1500-CE-230-460 50/60 ..... \$7960.**

**Fomblin:** For pumps filled with Fomblin PFPE fluid YL VAC 16/6  
 add to p/n "Fomblin" and increase the price to ..... **\$11,820.**