

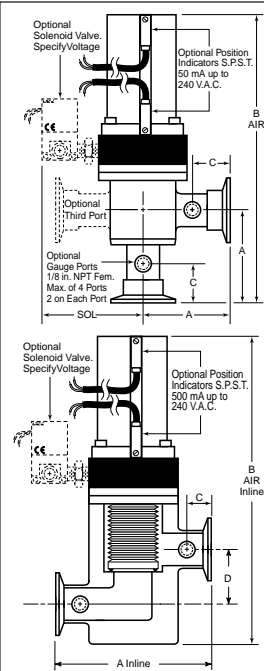


Aluminum and Stainless Steel Pneumatic or Manual Actuators, Angle or Inline Style with Port Sizes from NW-16 To NW-50

- Less Outgassing Than Stainless, See Pg. 39
- Aluminum or 304 Stainless Steel Bodies
- Leak Tested to Better Than  $5 \times 10^{-10}$  scc/s
- Select Welded Bellows or O-Ring Stem Seals
- Viton® Seat And Bonnet Seal Are Standard
- Kalrez® Seat & Bonnet Seals Also Available
- Gauge Fittings Available On Either Port
- Failsafe; Choose Spring Close Or Air Close
- All Valves (RoHS) 2002/95/EC Compliant

### Air To Open/Spring To Close

(See "Optional Features" on next page for Air Open/Air Close or Spring to Open)

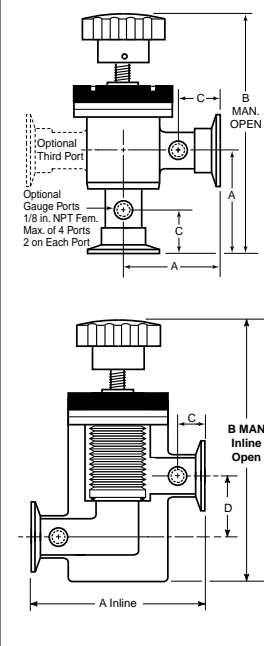


Part Number For Inline Style replace "ANG" with "INL"	Description	Angle Style			Inline Style					
		Price	A	B Air	C	Price	A	B Air	D	
<b>SS-BEL-ANG-.75-AIR</b>	No Flanges, 0.75 O.D.	\$308.	2.1	6.2	.85	\$313.	4.2	5.9	1.1	
<b>SS-BEL-ANG-133-AIR</b>	1.33 CF on Both Ports	\$340.	2.1	6.2	.85	\$349.	4.2	5.9	1.1	
<b>SS-BEL-ANG-16-AIR</b>	NW-16 on Both Ports	\$340.	2.1	6.2	.85	\$349.	4.2	5.9	1.1	
<b>ALUM-BEL-ANG-16-AIR</b>	Aluminum Body, NW-16	\$288.	2.1	6.2	.85	\$314.	4.2	5.9	1.1	
<b>SS-BEL-ANG-1.0-AIR</b>	No Flanges, 1.00 O.D.	\$365.	2.0	5.9	.82	\$377.	4.0	6.1	1.4	
<b>SS-BEL-ANG-212-AIR</b>	2.12 CF on Both Ports	\$383.	2.0	5.9	.82	\$388.	4.0	6.1	1.4	
<b>SS-BEL-ANG-25-AIR</b>	NW-25 on Both Ports	\$383.	2.0	5.9	.82	\$388.	4.0	6.1	1.4	
<b>ALUM-BEL-ANG-25-AIR</b>	Aluminum Body, NW-25	\$328.	2.0	5.9	.82	\$326.	4.0	6.1	1.4	
<b>SS-BEL-ANG-1.5-AIR</b>	No Flanges, 1.50 O.D.	\$410.	2.4	7.8	.90	\$434.	4.8	8.4	1.9	
<b>SS-BEL-ANG-275-AIR</b>	2.75 CF on Both Ports	\$421.	2.4	7.8	.90	\$439.	4.8	8.4	1.9	
<b>SS-BEL-ANG-40-AIR</b>	NW-40 on Both Ports	\$421.	2.4	7.8	.90	\$439.	4.8	8.4	1.9	
<b>ALUM-BEL-ANG-40-AIR</b>	Aluminum Body, NW-40	\$387.	2.4	7.8	.90	\$429.	4.8	8.4	1.9	
<b>SS-BEL-ANG-2.0-AIR</b>	No Flanges, 2.00 O.D.	\$524.	3.4	10.3	1.14	\$553.	6.8	11.0	2.6	
<b>SS-BEL-ANG-338-AIR</b>	3.38 CF on Both Ports	\$530.	3.4	10.3	1.14	\$559.	6.8	11.0	2.6	
<b>SS-BEL-ANG-50-AIR</b>	NW-50 on Both Ports	\$530.	3.4	10.3	1.14	\$559.	6.8	11.0	2.6	
<b>ALUM-BEL-ANG-50-AIR</b>	Aluminum Body, NW-50	\$515.	2.8	10.3	1.14	\$520.	6.8	11.0	2.6	
<b>O-Ring Stem Seal 250,000 Cycles</b>	<b>ALUM-O-ANG-16-AIR</b>	Aluminum NW-16	\$275.	1.6	5.6	.85	\$275.	4.2	5.9	1.1
	<b>ALUM-O-ANG-25-AIR</b>	Body with NW-25	\$288.	2.0	5.9	.82	\$296.	4.0	6.1	1.4
	<b>ALUM-O-ANG-40-AIR</b>	O-Ring NW-40	\$374.	2.6	7.8	.90	\$385.	4.8	8.4	1.9
	<b>ALUM-O-ANG-50-AIR</b>	Shaft Seal NW-50	\$458.	2.8	9.7	1.14	\$469.	6.8	11.0	2.6

**Bellows Stem Seal 1,000,000 Cycles**

**O-Ring Stem Seal 250,000 Cycles**

### Manual Valves



Part Number For Inline Style replace "ANG" with "INL"	Description	Angle Style			Inline Style					
		Price	A	B Man	C	Price	A	B Man	D	
<b>SS-BEL-ANG-.75-MAN</b>	No Flanges, 0.75 O.D.	\$286.	2.1	6.2	.85	\$324.	4.2	5.9	1.1	
<b>SS-BEL-ANG-133-MAN</b>	1.33 CF on Both Ports	\$301.	2.1	6.2	.85	\$325.	4.2	5.9	1.1	
<b>SS-BEL-ANG-16-MAN</b>	NW-16 on Both Ports	\$301.	2.1	6.2	.85	\$325.	4.2	5.9	1.1	
<b>ALUM-BEL-ANG-16-MAN</b>	Aluminum Body, NW-16	\$275.	2.1	6.2	.85	\$299.	4.2	5.9	1.1	
<b>SS-BEL-ANG-1.0-MAN</b>	No Flanges, 1.00 O.D.	\$286.	2.0	5.9	.82	\$331.	4.0	6.0	1.3	
<b>SS-BEL-ANG-212-MAN</b>	2.12 CF on Both Ports	\$314.	2.0	5.9	.82	\$337.	4.0	6.0	1.3	
<b>SS-BEL-ANG-25-MAN</b>	NW-25 on Both Ports	\$314.	2.0	5.9	.82	\$337.	4.0	6.0	1.3	
<b>ALUM-BEL-ANG-25-MAN</b>	Aluminum Body, NW-25	\$296.	2.0	5.9	.82	\$331.	4.0	6.0	1.3	
<b>SS-BEL-ANG-1.5-MAN</b>	No Flanges, 1.50 O.D.	\$426.	2.4	7.8	.90	\$426.	4.8	8.4	1.9	
<b>SS-BEL-ANG-275-MAN</b>	2.75 CF on Both Ports	\$434.	2.4	7.8	.90	\$434.	4.8	8.4	1.9	
<b>SS-BEL-ANG-40-MAN</b>	NW-40 on Both Ports	\$434.	2.4	7.8	.90	\$434.	4.8	8.4	1.9	
<b>ALUM-BEL-ANG-40-MAN</b>	Aluminum Body, NW-40	\$426.	2.4	7.8	.90	\$426.	4.8	8.4	1.9	
<b>SS-BEL-ANG-2.0-MAN</b>	No Flanges, 2.00 O.D.	\$469.	3.4	9.9	1.14	\$469.	6.8	10.6	2.6	
<b>SS-BEL-ANG-338-MAN</b>	3.38 CF on Both Ports	\$523.	3.4	9.9	1.14	\$487.	6.8	10.6	2.6	
<b>SS-BEL-ANG-50-MAN</b>	NW-50 on Both Ports	\$513.	3.4	9.9	1.14	\$487.	6.8	10.6	2.6	
<b>ALUM-BEL-ANG-50-MAN</b>	Aluminum Body, NW-50	\$469.	2.8	9.9	1.14	\$445.	6.8	10.6	2.6	
<b>O-Ring Stem Seal 250,000 Cycles</b>	<b>ALUM-O-ANG-16-MAN</b>	Aluminum NW-16	\$256.	1.6	5.6	.85	\$277.	4.2	5.9	1.1
	<b>ALUM-O-ANG-25-MAN</b>	Body with NW-25	\$281.	2.0	5.8	.82	\$301.	4.0	6.0	1.3
	<b>ALUM-O-ANG-40-MAN</b>	O-Ring NW-40	\$374.	2.6	7.8	.90	\$385.	4.8	8.4	1.9
	<b>ALUM-O-ANG-50-MAN</b>	Shaft Seal NW-50	\$433.	2.8	9.3	1.14	\$408.	6.8	10.6	2.6

**Bellows Stem Seal 1,000,000 Cycles**

**O-Ring Stem Seal 250,000 Cycles**

## 3 Way Valves, Manual or Air Operated



Photo shows an NW-40 valve with optional position indicators on one side and one optional gauge port. Up to 3 gauge ports available at \$28. each.

Aluminum bodies with bellows shaft seal. The standard pneumatic actuator is air to open, spring to close. Other options such as gauge ports and position indicators are available. Two 3-way solenoids required. See below for cost of solenoids.

- NW-16, P/N: 3W-ALUM-BEL-16AIR. . . . . \$620.
- NW-25, P/N: 3W-ALUM-BEL-25AIR. . . . . \$642.
- NW-40, P/N: 3W-ALUM-BEL-40AIR. . . . . \$707.
- NW-50, P/N: 3W-ALUM-BEL-50AIR. . . . . \$799.
- NW-16, P/N: 3W-ALUM-BEL-16MAN . . . . . \$585.
- NW-25, P/N: 3W-ALUM-BEL-25MAN . . . . . \$602.
- NW-40, P/N: 3W-ALUM-BEL-40MAN . . . . . \$666.
- NW-50, P/N: 3W-ALUM-BEL-50MAN . . . . . \$742.
- 1/8 In. NPT GAUGE PORTS Specify Location. . . . . \$29. each

### VCR or 1/8 Inch NPT Ports For Gauge Tubes

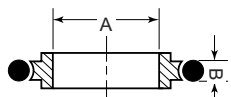
VCR-4 or 1/8 inch NPT female ports can be provided on the end or side valve ports. Any number of these ports in any combination can be specified by adding the appropriate suffix to the part number. For example, 1/8 RS suffix would specify a 1/8 inch NPT port on the right of the side port.

**1/8 NPT Port Add:** Alum. valves **\$29.** SS valves **\$84.**

**VCR-4 Port Add:** Stainless Steel only. . . . . **\$117.**

	Position Reference		P/N for 1/8 NPT Port	P/N for VCR Port
	RS	Right Side Port	H700020	H700033
	LS	Left Side Port	H700021	H700034
	RB	Right Bottom Port	H700022	H700035
	LB	Left Bottom Port	H700023	H700036

## Centering Rings



**304 Stainless Steel With Viton O-Rings**

Flange Size	A	B	Part Number	Price
NW-16	0.63 (16)	0.21 (5.3)	CTR-RING 16	\$4.00
NW-25	0.984 (25)	0.21 (5.3)	CTR-RING 25	\$5.00
NW-40	1.575 (40)	0.21 (5.3)	CTR-RING 40	\$7.00
NW-50	1.969 (50)	0.21 (5.3)	CTR-RING 50	\$9.00

## Position Indicators

Pneumatically activated valves can be equipped with a pair of SPST switches to indicate valve open and closed. These unpowered switches have contacts rated for up to 500 mA at up to 240 VAC, non-inductive.

**Add the suffix 'PI'. (Open & Closed). . . Add \$110./pair**

## Optional Third Port for Angle or Inline Valves



Standard angle valves have two ports: one bottom and one side. To add an additional side port for vacuum gauge tube installation, specify the optional third port by simply adding the suffix "3-Port" to any valve part number and add the cost shown below:

- NW-16. . . add \$110.    NW-40. . . add \$152.
- NW-25. . . add \$133.    NW-50. . . add \$196.

## Spring to Open/Air to Close

For this option, add "SO" to the P/N & add cost below:

- NW-16 . . . . . add \$50.            NW-25 . . . . . add \$50.
- NW-40 . . . . . add \$95.            NW-50 . . . . . add \$102.

## Air to Open/Air To Close

Standard valves use air to open and spring to close but as an option the valves can be built for air to open and close. Add the suffix 'AC' to the part number. Note that with this option a 4 way solenoid is required.

**Air To Close and Open P/N: H700024 . . . . . Add \$62.**

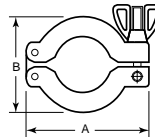
**1/8 NPT/ISO Adapter Fitting for Air P/N: H700032. N/C**

## Solenoids For Pneumatic Valves

Because many customers use central air manifolds to activate valves we offer these solenoids as an optional rather than standard feature. Solenoids are specified by adding a suffix to Valve part number below.

3 Way for Standard, Spring to Close Valves . . . . . \$68.		4 Way for Air Open/Air Close Valves. . . . . \$98.	
add Suffix to P/N	Solenoid P/N	add Suffix to P/N	Solenoid P/N
SOL-120 VAC	X134003	SOL-120 VAC	X703005
SOL-230 VAC	X134013	SOL-230 VAC	X134010
SOL-24 VDC	X134032	SOL-24 VDC	X703041

## Clamps



**Aluminum Clamps With Wing Nut & Screw Fastener**

Flange Size	A	B	Thickness	Part Number	Price
NW-16	2.24 (57)	1.69 (43)	0.63 (16)	AL-Clamp 16	\$4.00
NW-25	2.76 (70)	2.17 (55)	0.63 (16)	AL-Clamp 25	\$5.00
NW-40	3.39 (88)	2.76 (70)	0.63 (16)	AL-Clamp 40	\$6.00
NW-50	4.33 (110)	3.70 (94)	0.79 (20)	AL-Clamp 50	\$8.00